

SLOVENSKÝ ELEKTROENERGETICKÝ DISPEČING

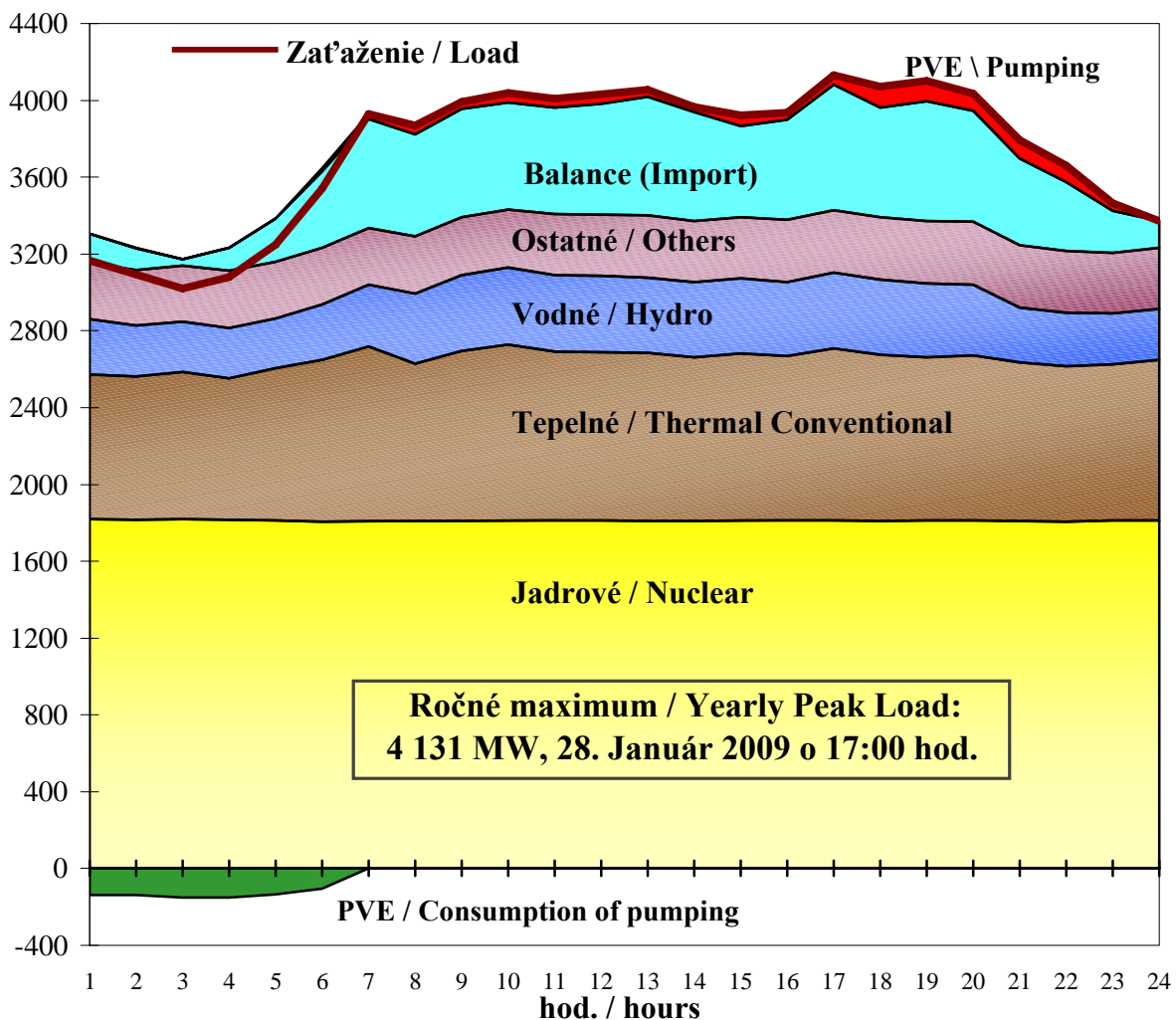
National Control Centre of Slovakia



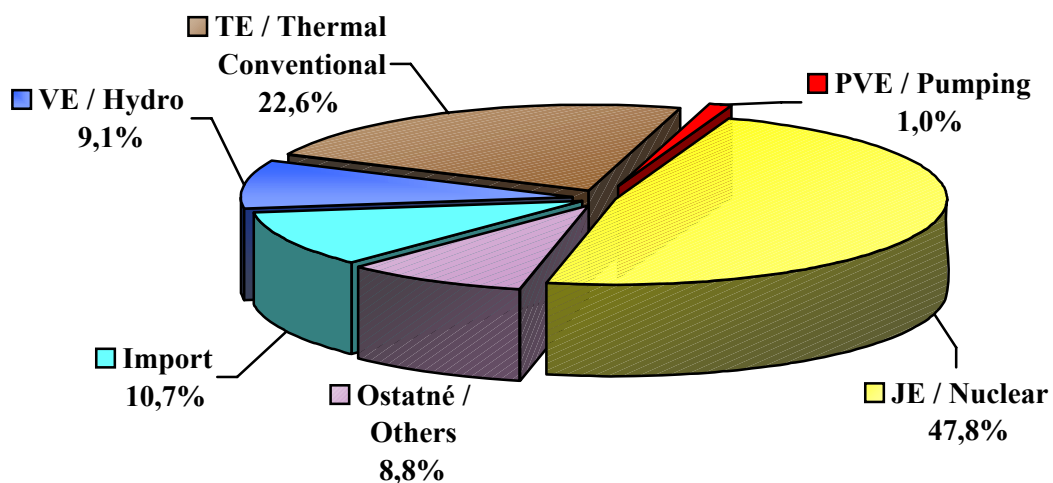
SLOVENSKÁ ELEKTRIZAČNÁ PRENOŠOVÁ SÚSTAVA, a.s.

2009

POKRYTIE ZAŤAŽENIA V DEŇ ROČNÉHO MAXIMA (MW) Load and Use of Sources on Day of Yearly Peak (MW)



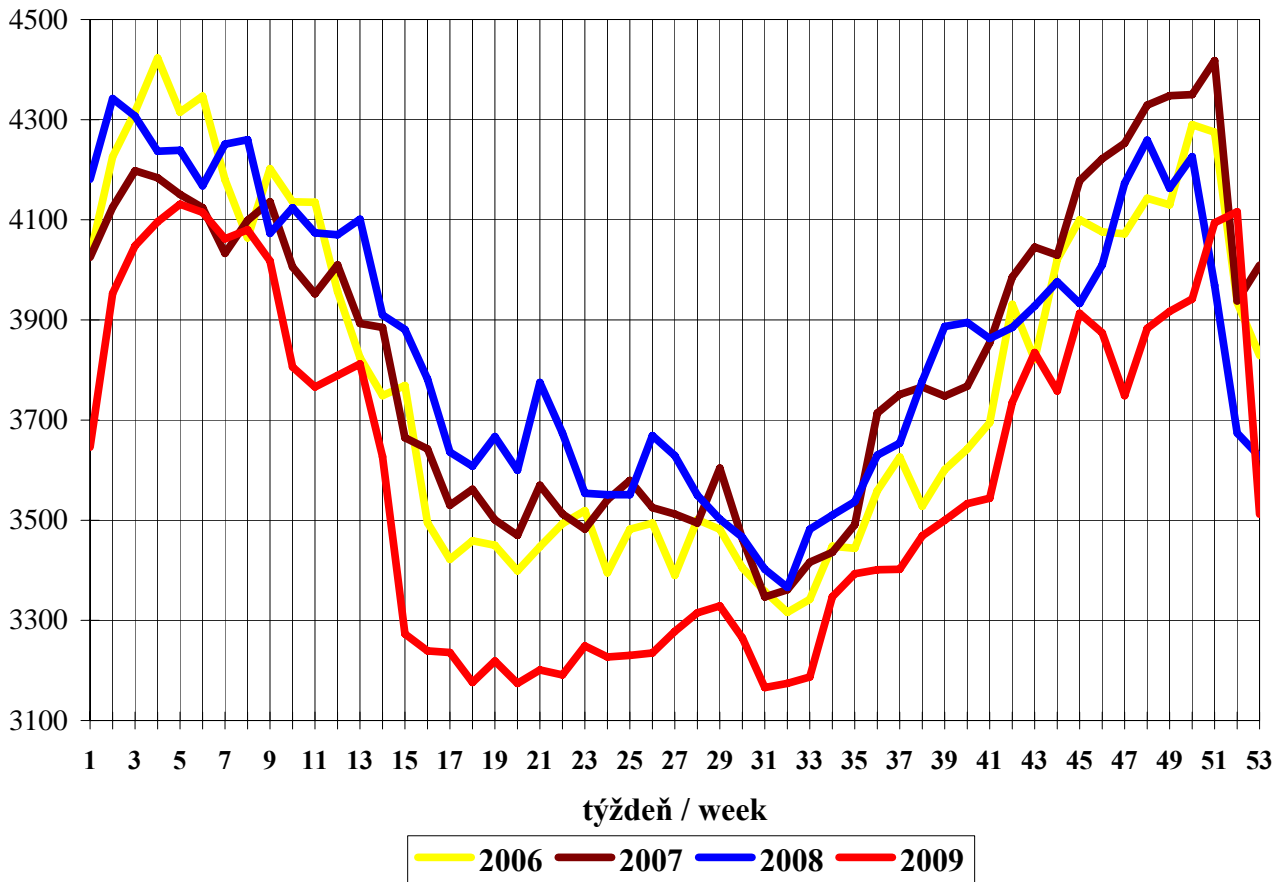
VÝROBA ELEKTRINY V DEŇ ROČNÉHO MAXIMA (28.1.) Production of Electricity on the Day of Yearly Peak



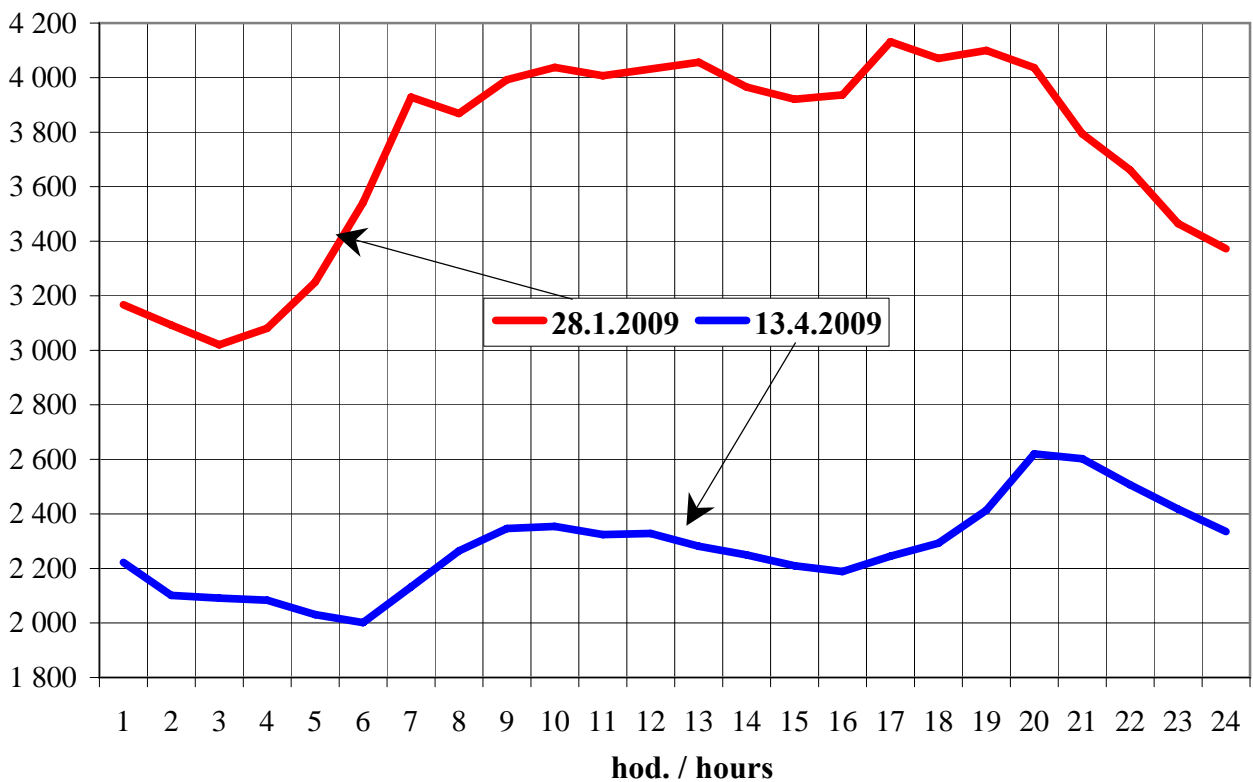
Uvedené údaje sú **brutto**.
Shown data are **brutto**.

Výroba / Production: 81 475 MWh
Import (saldo / balance): 9 726 MWh
Spotreba / Consumption: 91 201 MWh

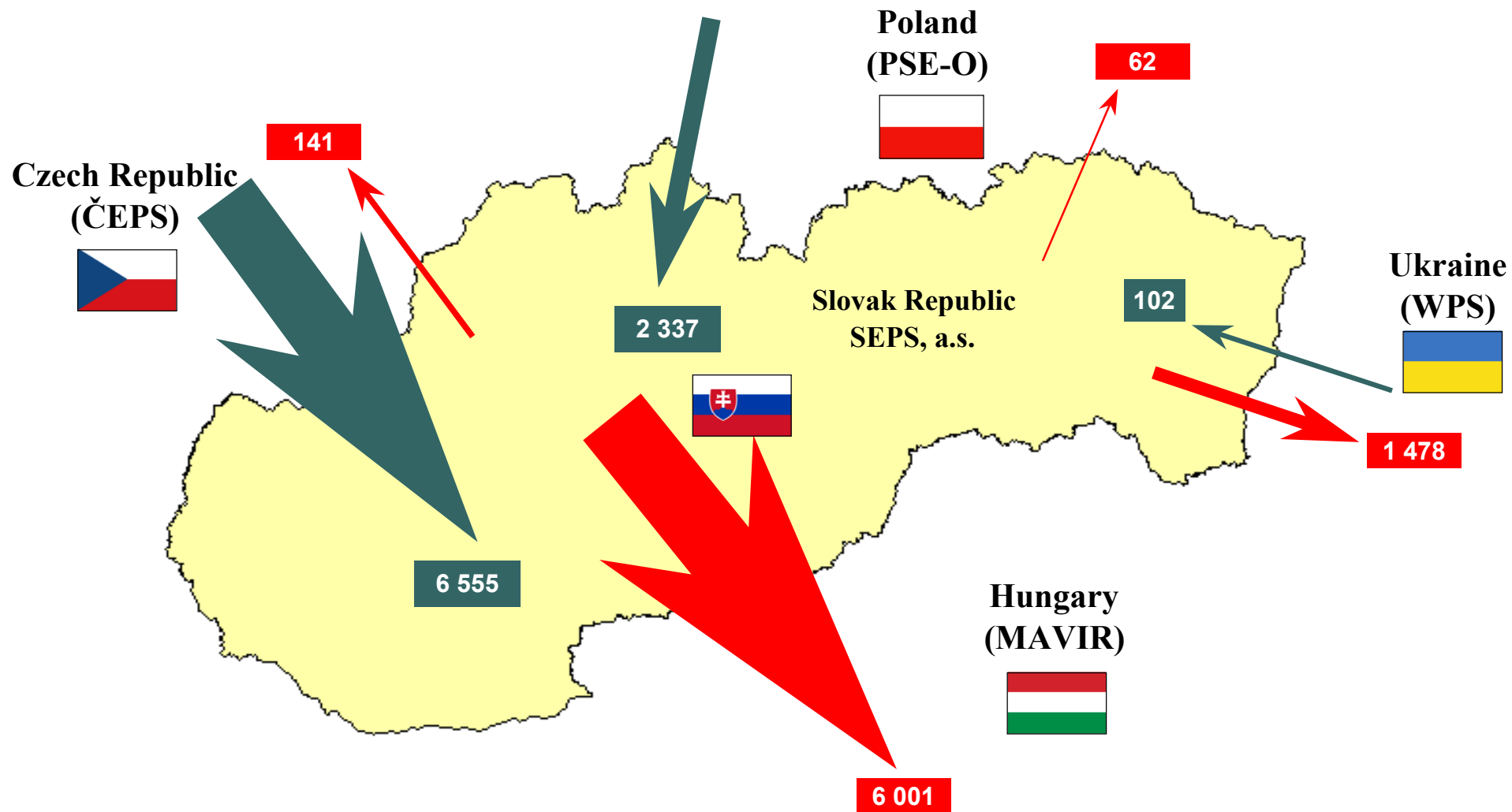
TÝŽDENNÉ MAXIMÁ ZAŤAŽENIA (MW) Weekly Peak Loads (MW)



PRIEBEH ZAŤAŽENIA V DŇOCH ROČNÉHO MAXIMA A MINIMA (MW) Load Curves on Days of the Peak and Minimum of the Year (MW)

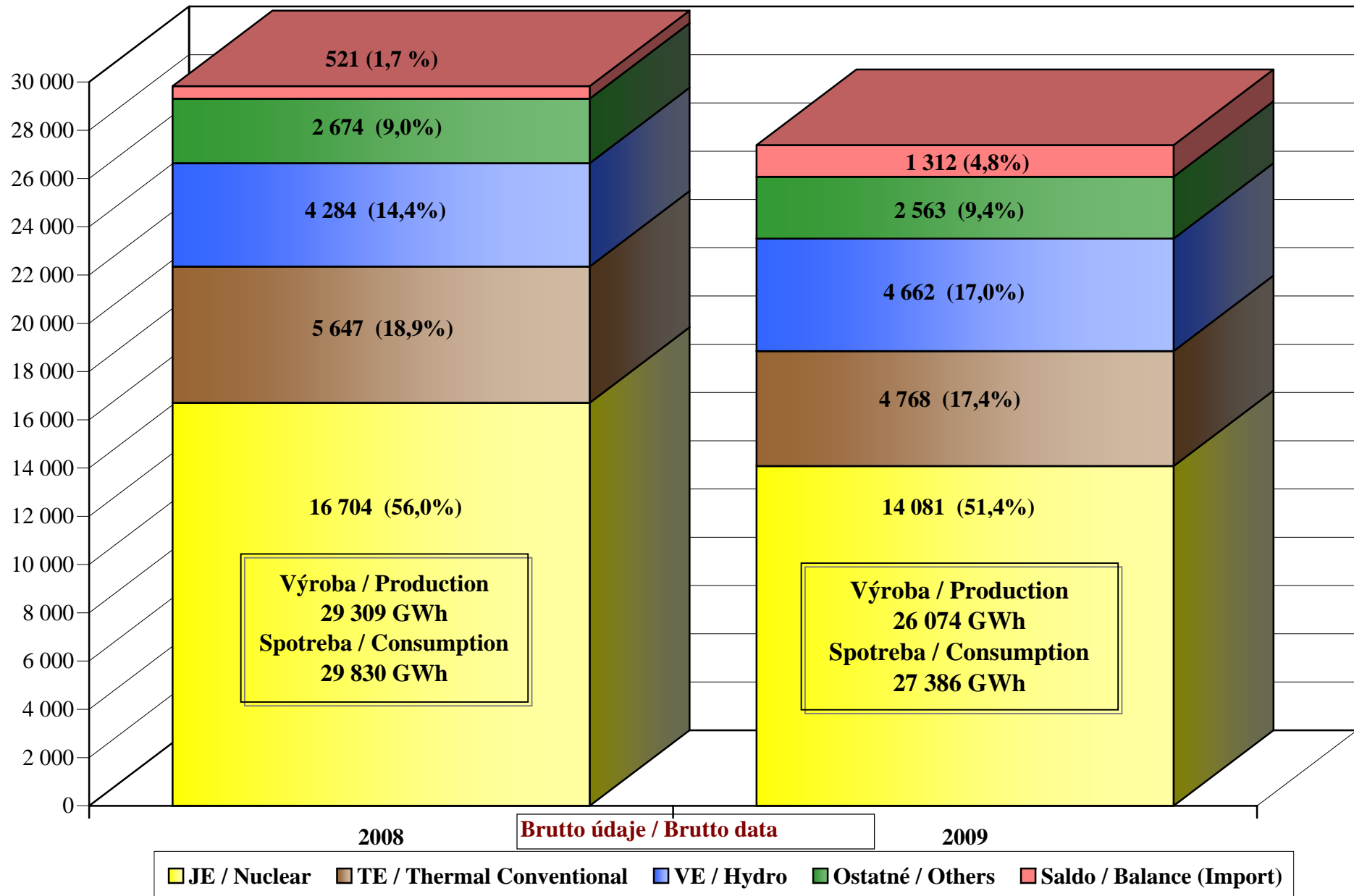


NAMERANÉ CEZHRANIČNÉ PRENOSY ELEKTRINY ES SR (GWh)
Metered Cross-Border Flows of Electricity (GWh)

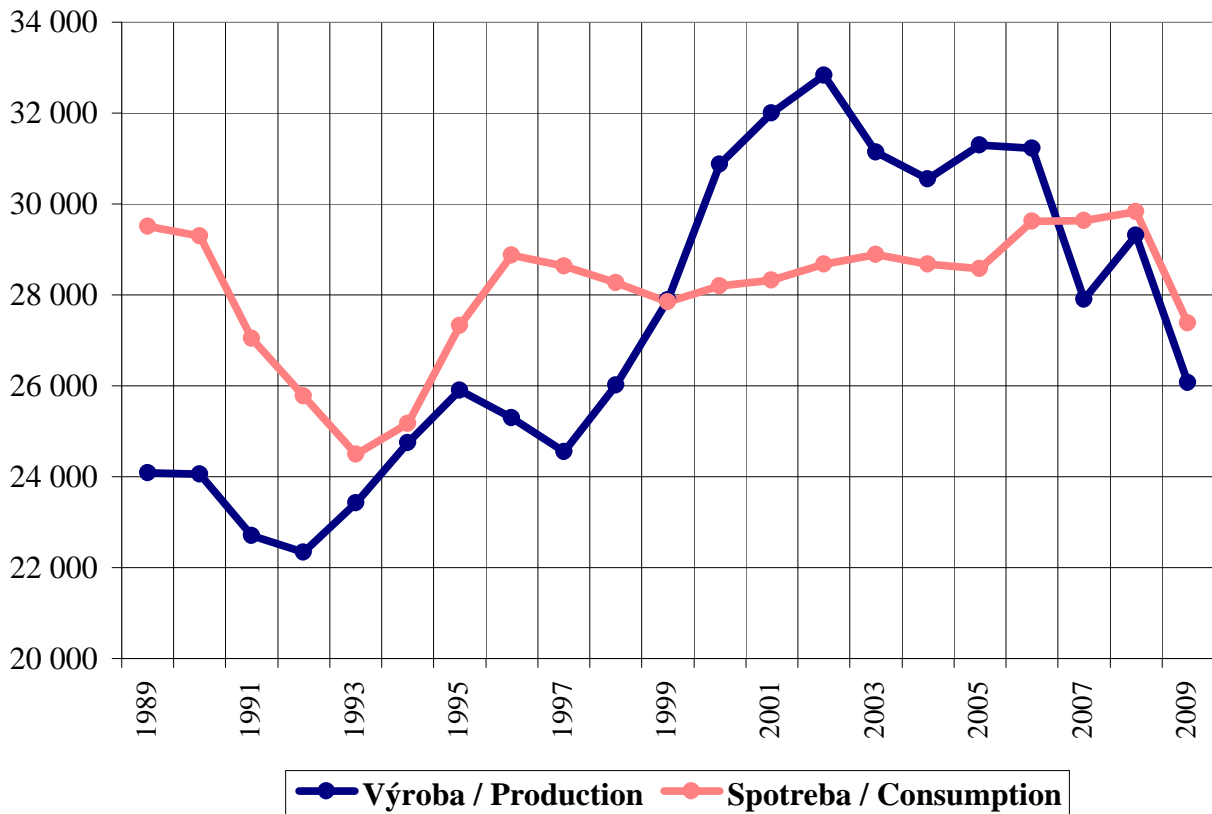


Σ Import: 8 994 GWh, Σ Export: 7 682 GWh, Saldo / Balance (Imp): 1 312 GWh

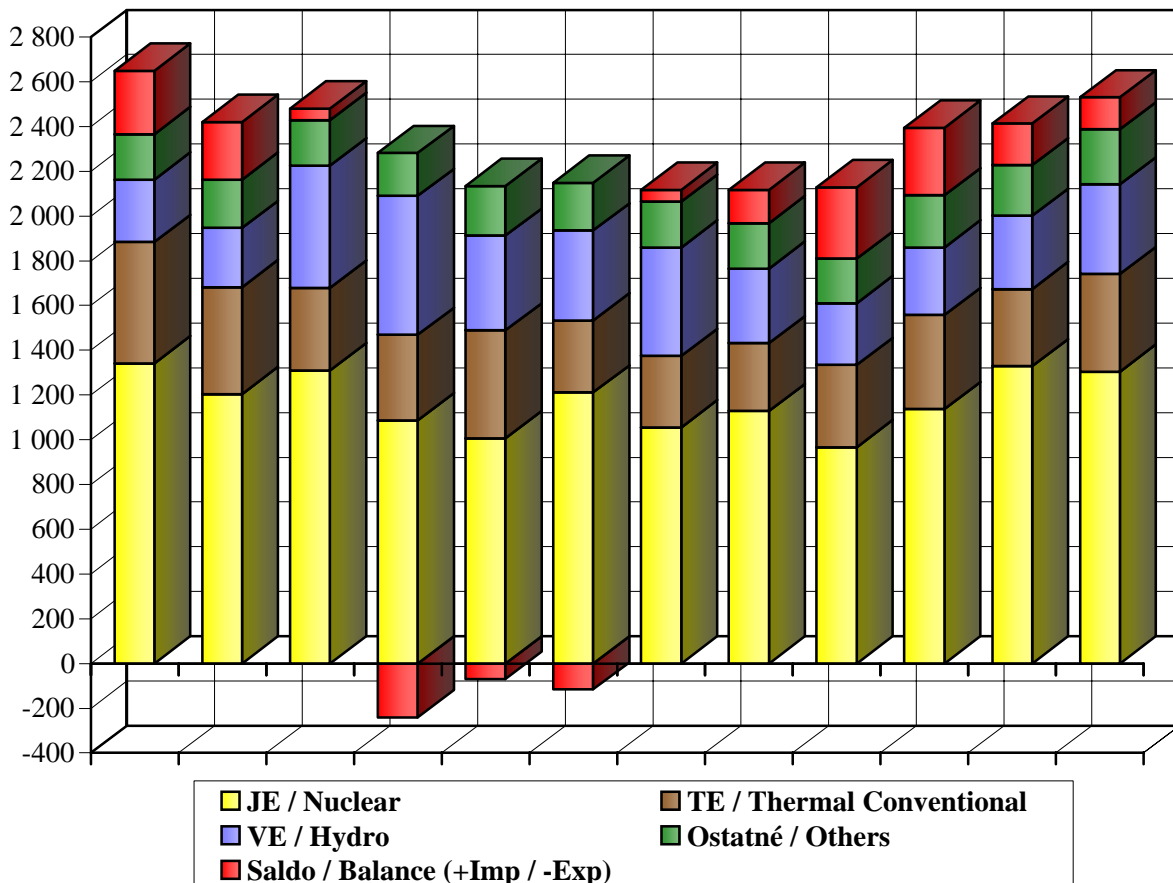
PODIEL ZDROJOV NA POKRÝVANÍ ROČNEJ SPOTREBY (GWh)
Share of sources covering yearly consumption (GWh)



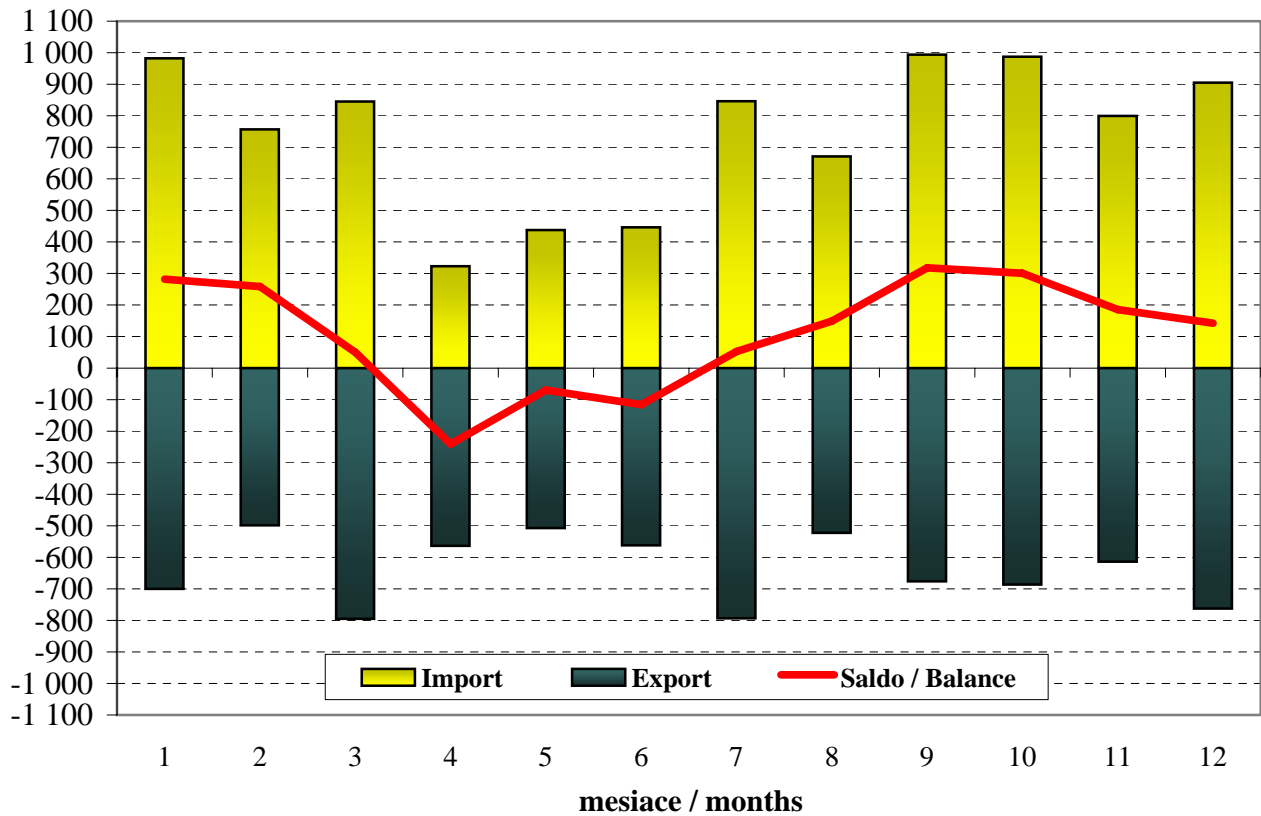
ROČNÁ VÝROBA A SPOTREBA ELEKTRINY (GWh) Yearly Electricity Production and Consumption (GWh)



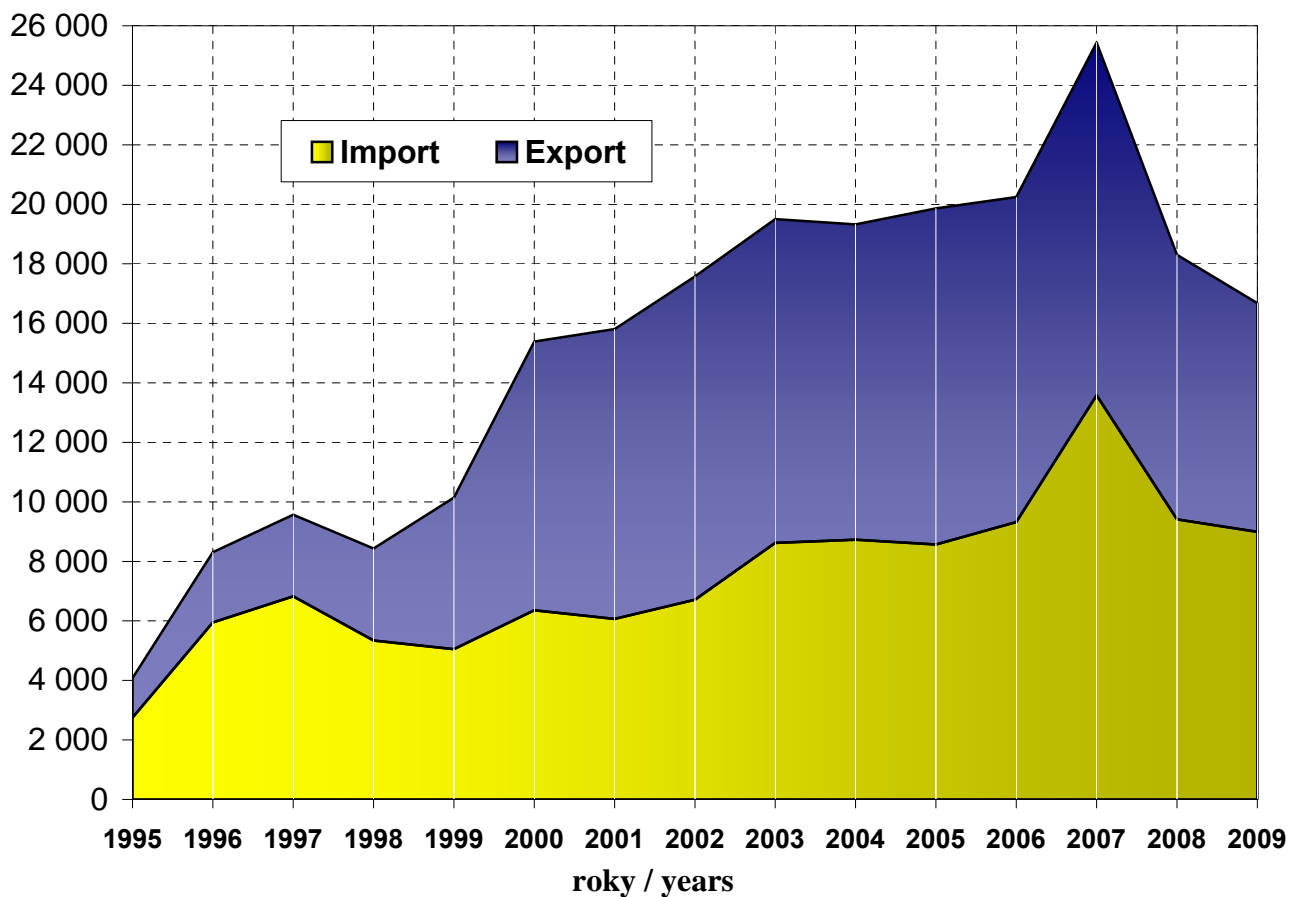
PODIEL ZDROJOV NA POKRÝVANÍ MESAČNEJ SPOTREBY (GWh) Share of sources covering monthly consumption (GWh)



NAMERANÉ MESAČNÉ CEZHRANIČNÉ PRENOSY ES SR (GWh)
Monthly Metered Cross-Border Flows of Slovakia (GWh)

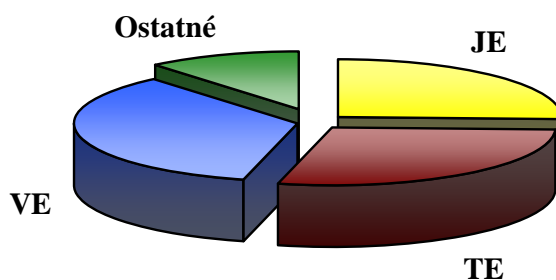


NAMERANÉ CEZHRANIČNÉ PRENOSY ES SR (GWh)
Metered Cross-Border Flows of Slovakia (GWh)

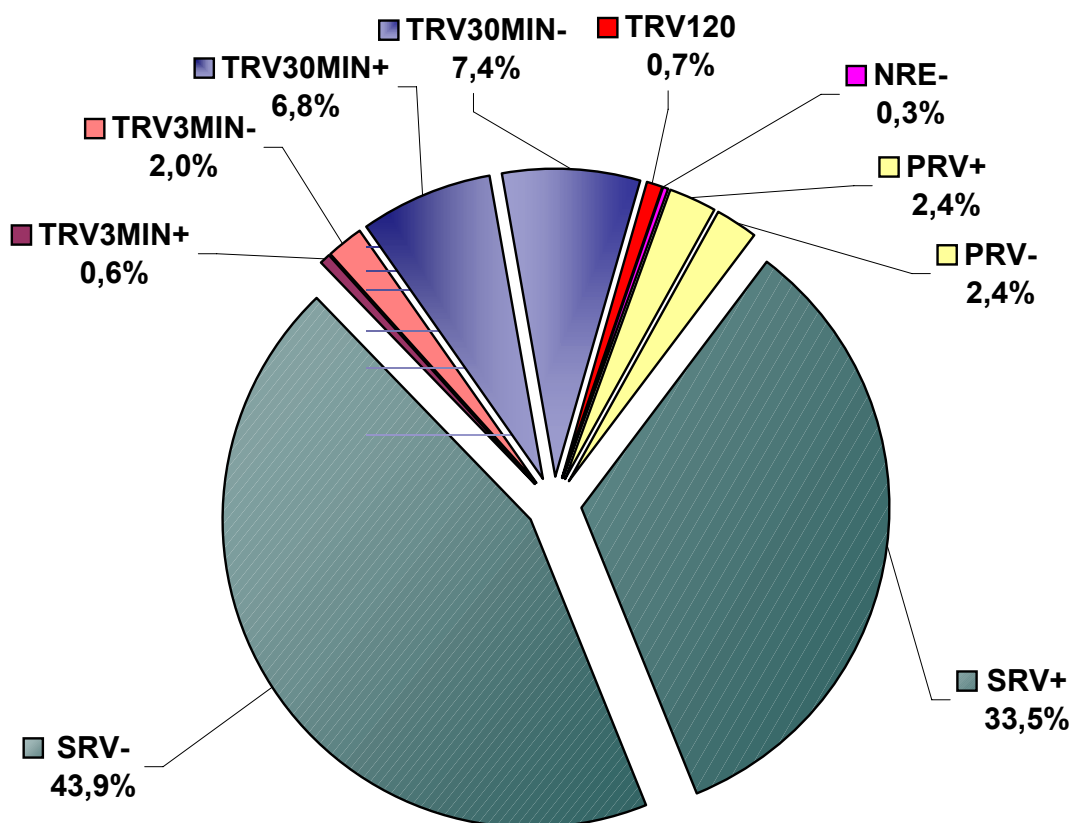


INŠTALOVANÝ VÝKON ELEKTRÁRNÍ ES SR Installed Capacity of Power plants in Slovakia

Elektrárň	MW	%	Type
JE	1 820	25,6	Nuclear
TE	2 009	28,3	Thermal
VE	2 478	34,9	Hydro
Ostatné	794	11,2	Others
Suma	7 101		Total



ROČNÁ DODÁVKA REGULAČNEJ ELEKTRINY DO ES SR Yearly Supply of Regulation Electricity in the Power System



PRENOSOVÁ SÚSTAVA SLOVENSKEJ REPUBLIKY Transmission System of Slovak Republic

Celkový transformačný výkon	10 010 MVA	Total transformation capacity
Vedenia 400 kV	1 776 km	400 kV Lines
Vedenia 220 kV	962 km	220 kV Lines
Rozvodne 400 kV	17	400 kV Substations
Rozvodne 220 kV	8	220 kV Substations
Transformátory 400/220 kV	1 400 MVA	400/220 kV Transformers
Transformátory 400/110 kV	6 410 MVA	400/110 kV Transformers
Transformátory 220/110 kV	2 200 MVA	220/110 kV Transformers