

# SLOVENSKÝ ELEKTROENERGETICKÝ DISPEČING

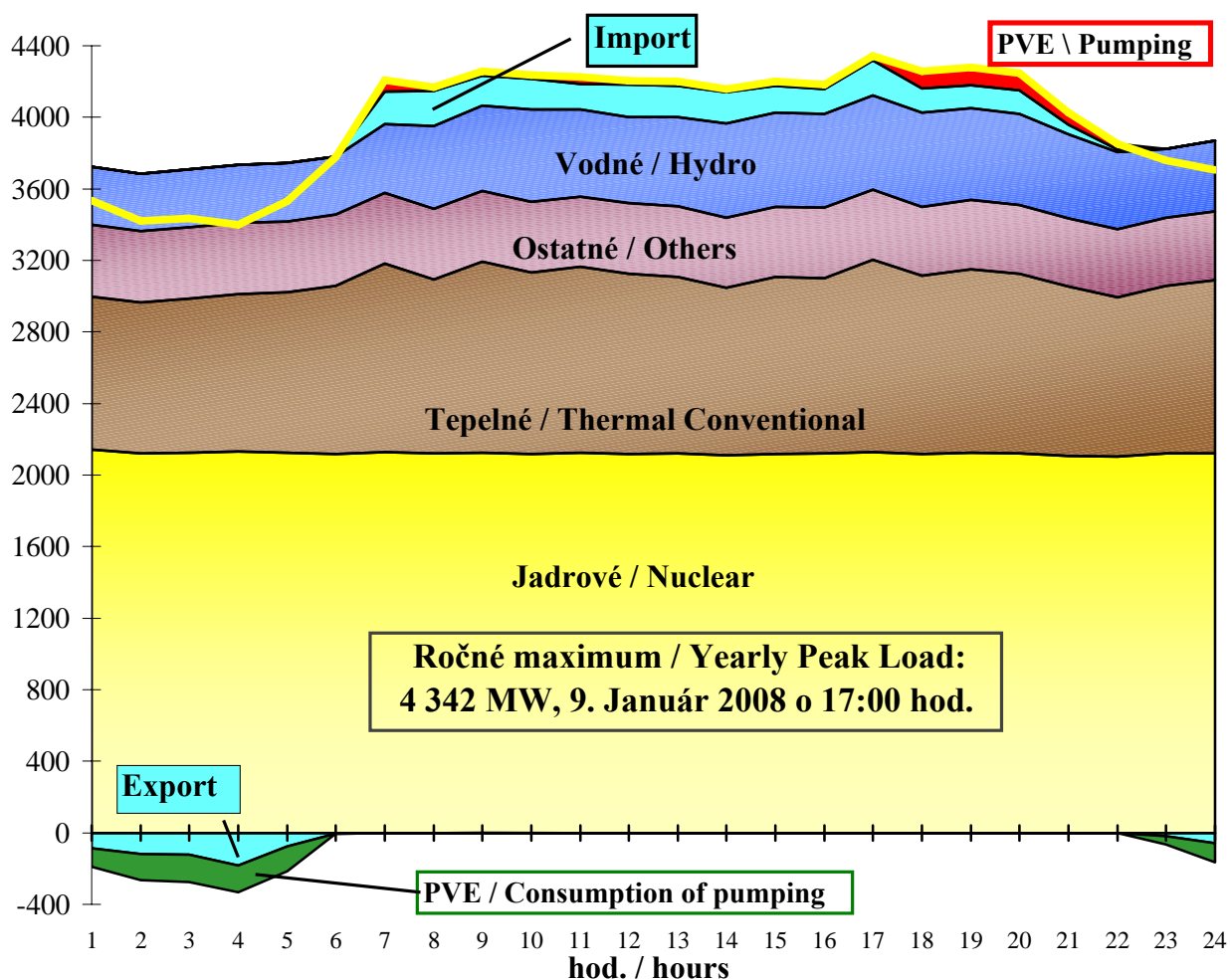
## Slovak National Dispatch Centre



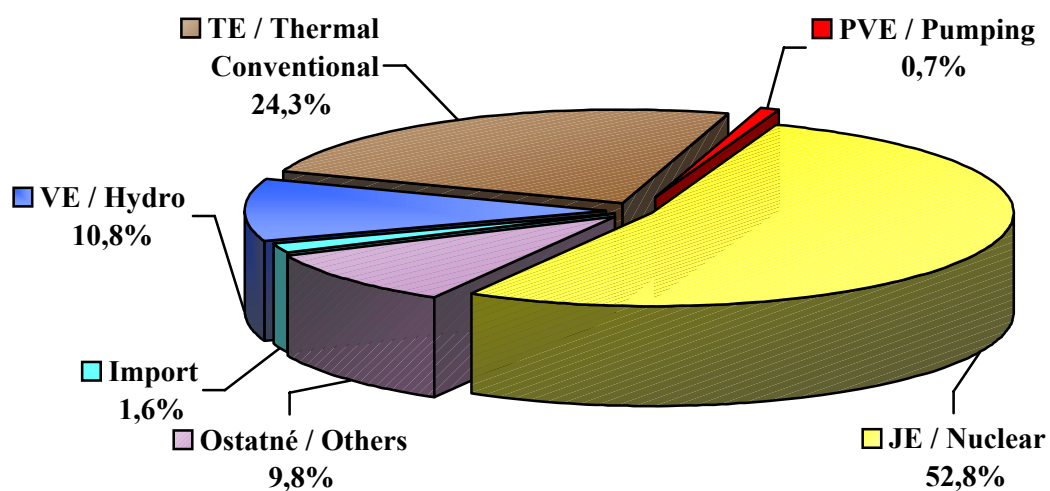
SLOVENSKÁ ELEKTRIZAČNÁ PRENOŠOVÁ SÚSTAVA, a.s.

2008

## POKRYTIE ZAŤAŽENIA V DEŇ ROČNÉHO MAXIMA (MW) Coverage of Load on Day of Yearly Peak (MW)



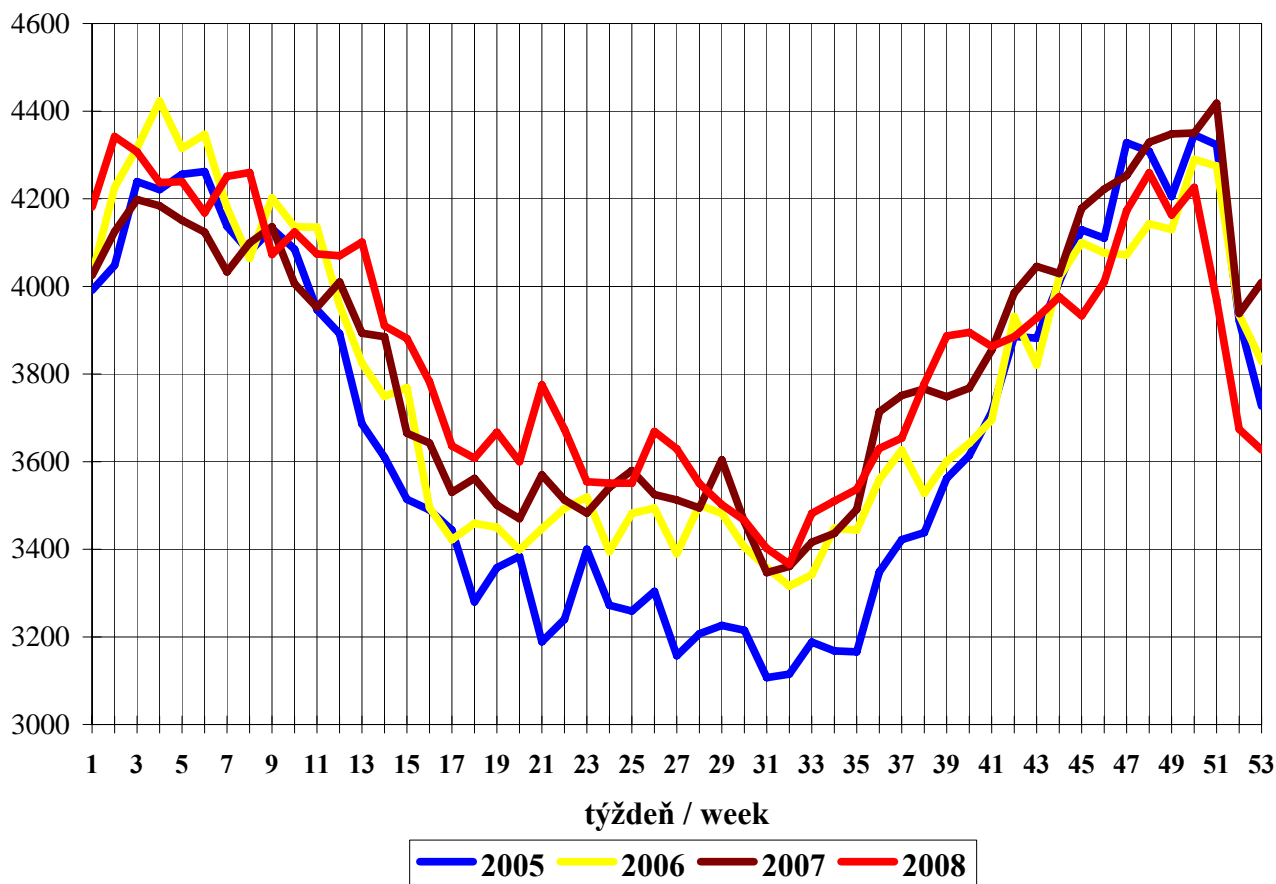
## VÝROBA ELEKTRINY V DEŇ ROČNÉHO MAXIMA (9.1.) Production of Electricity on the Day of Yearly Peak



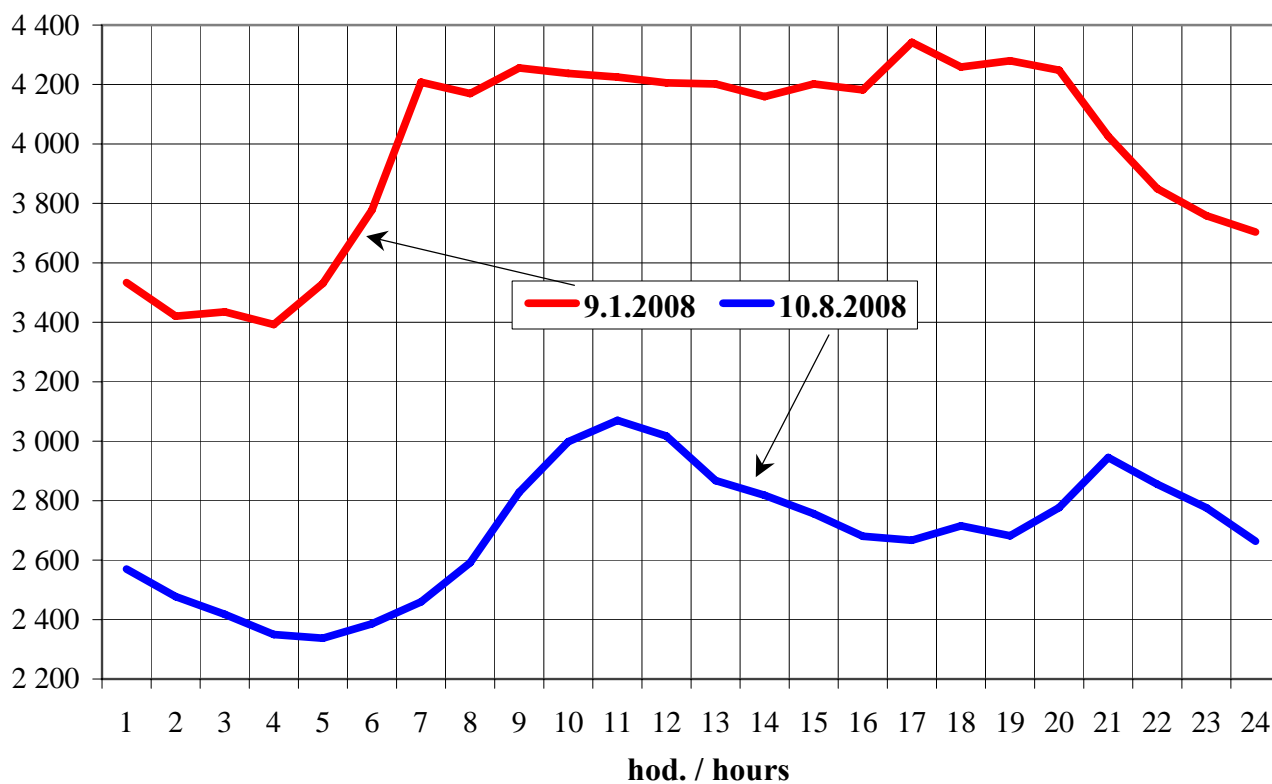
Uvedené údaje sú **brutto**.  
Shown data are **brutto**.

Výroba / Production: 95 309 MWh  
Import (saldo / balance): 1 557 MWh  
 Spotreba / Consumption: 96 865 MWh

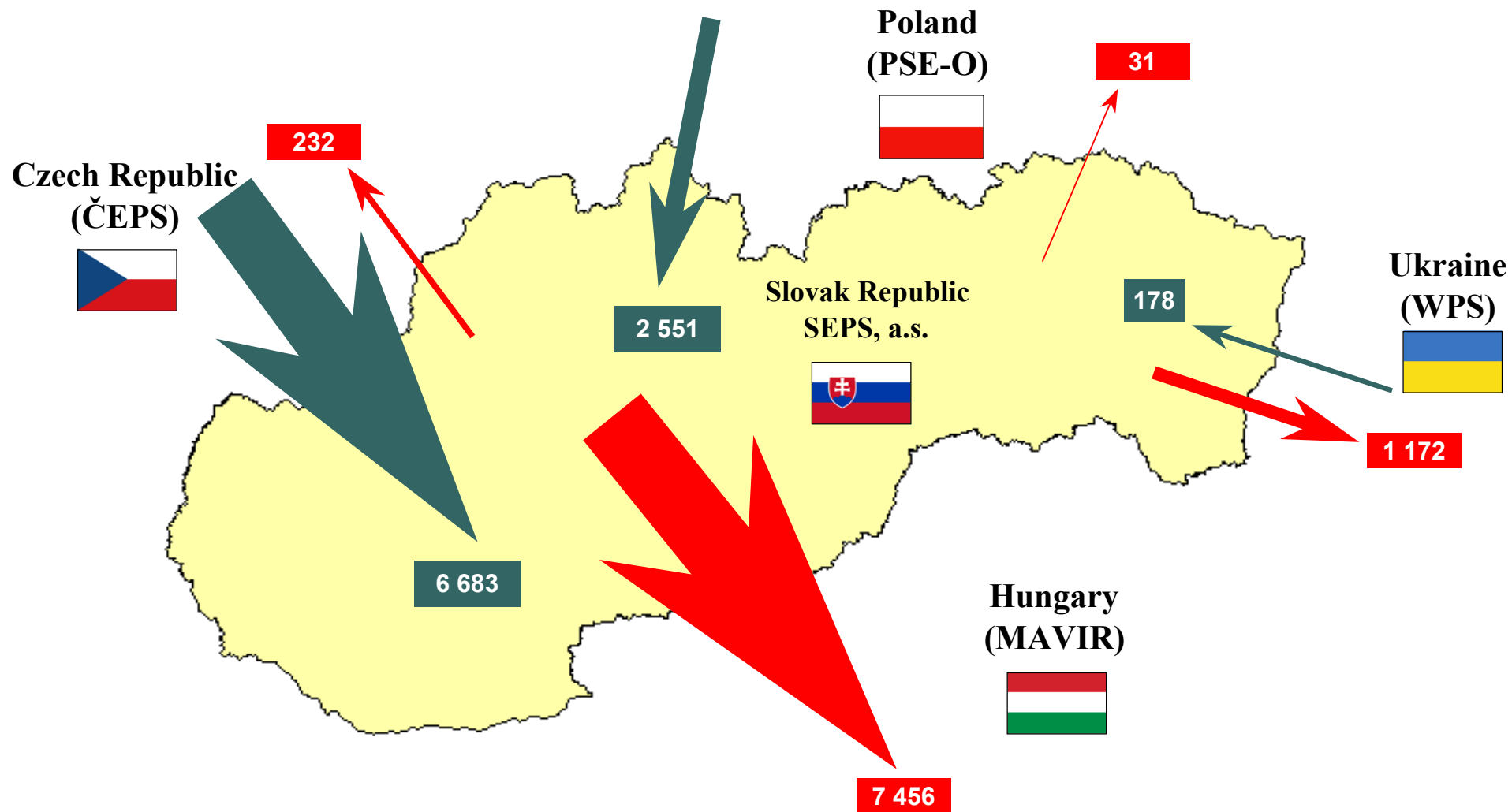
## TÝŽDENNÉ MAXIMÁ ZAŤAŽENIA (MW) Weekly Peak Loads (MW)



## PRIEBEH ZAŤAŽENIA V DŇOCH ROČNÉHO MAXIMA A MINIMA (MW) Load Curves on Days of Yearly Peak and Minimum (MW)

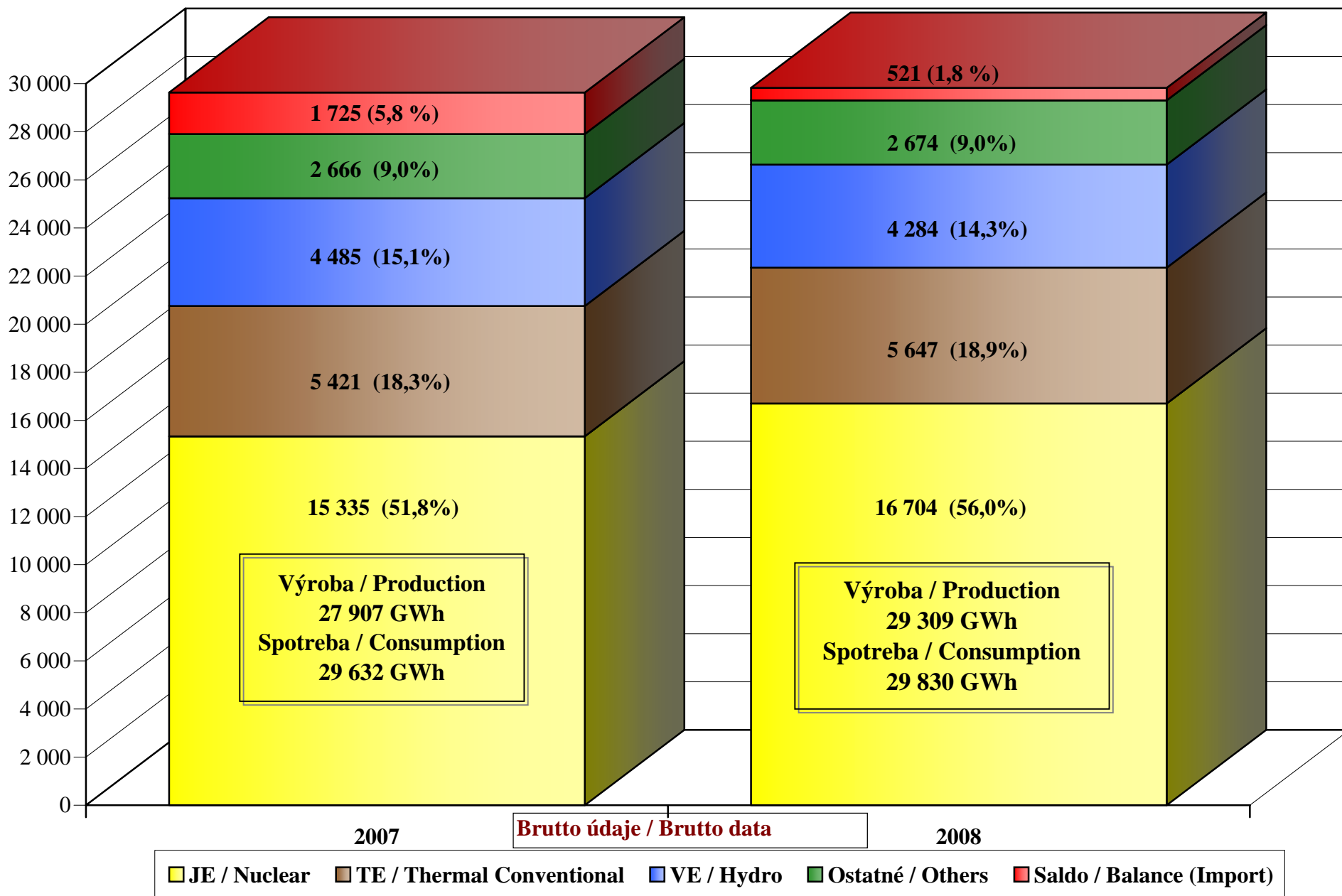


**NAMERANÉ CEZHRANIČNÉ PRENOSY ELEKTRINY ES SR (GWh)**  
**Physical Electricity Cross-Border Flows of Slovakia (GWh)**

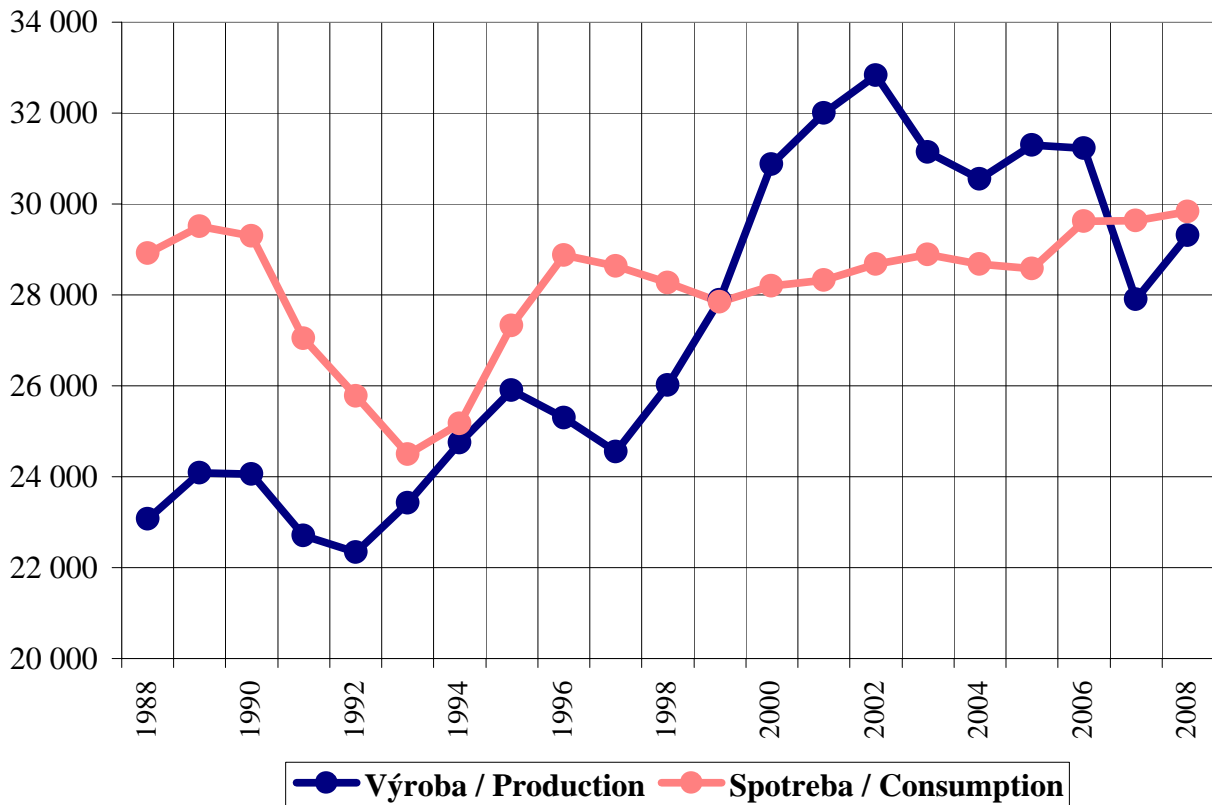


**Σ Import: 9 412 GWh, Σ Export: 8 891 GWh, Saldo / Balance (Imp): 521 GWh**

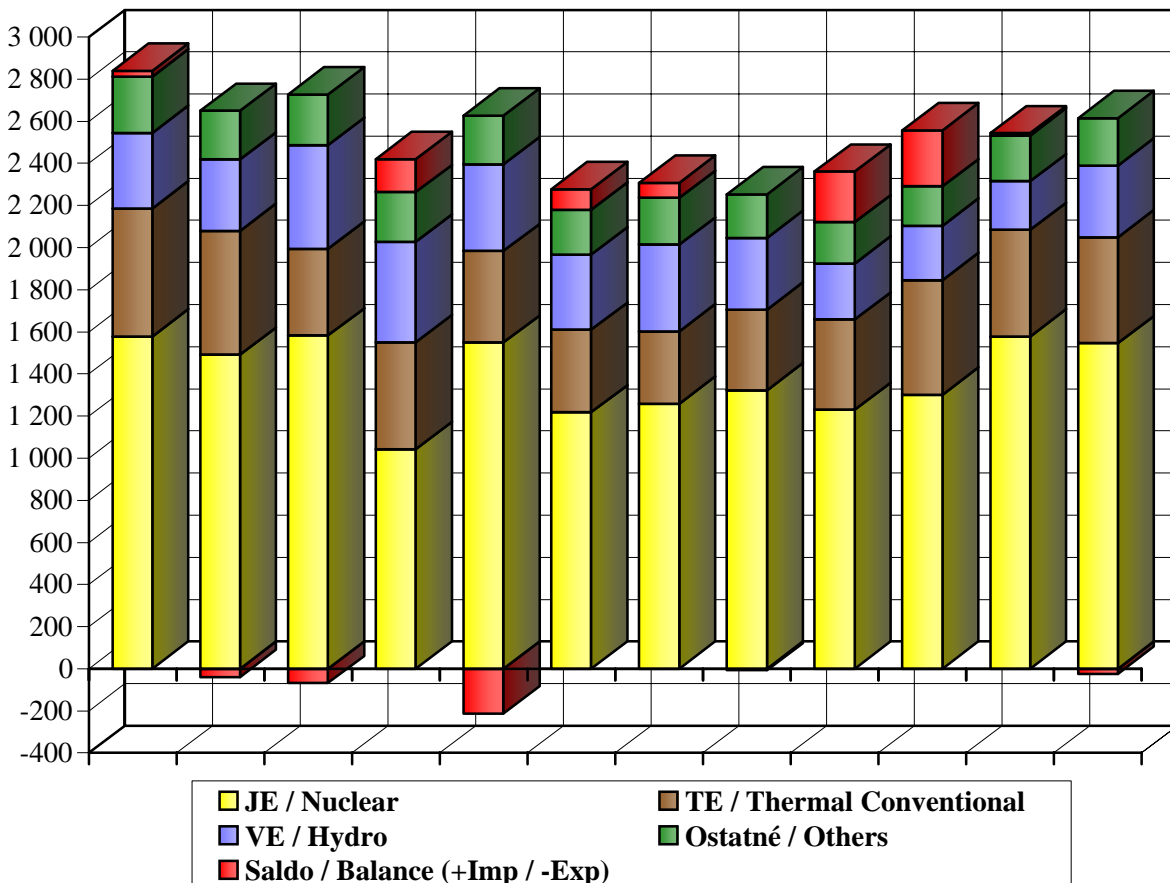
**PODIEL ZDROJOV NA POKRÝVANÍ ROČNEJ SPOTREBY (GWh)**  
**Share of sources covering yearly consumption (GWh)**



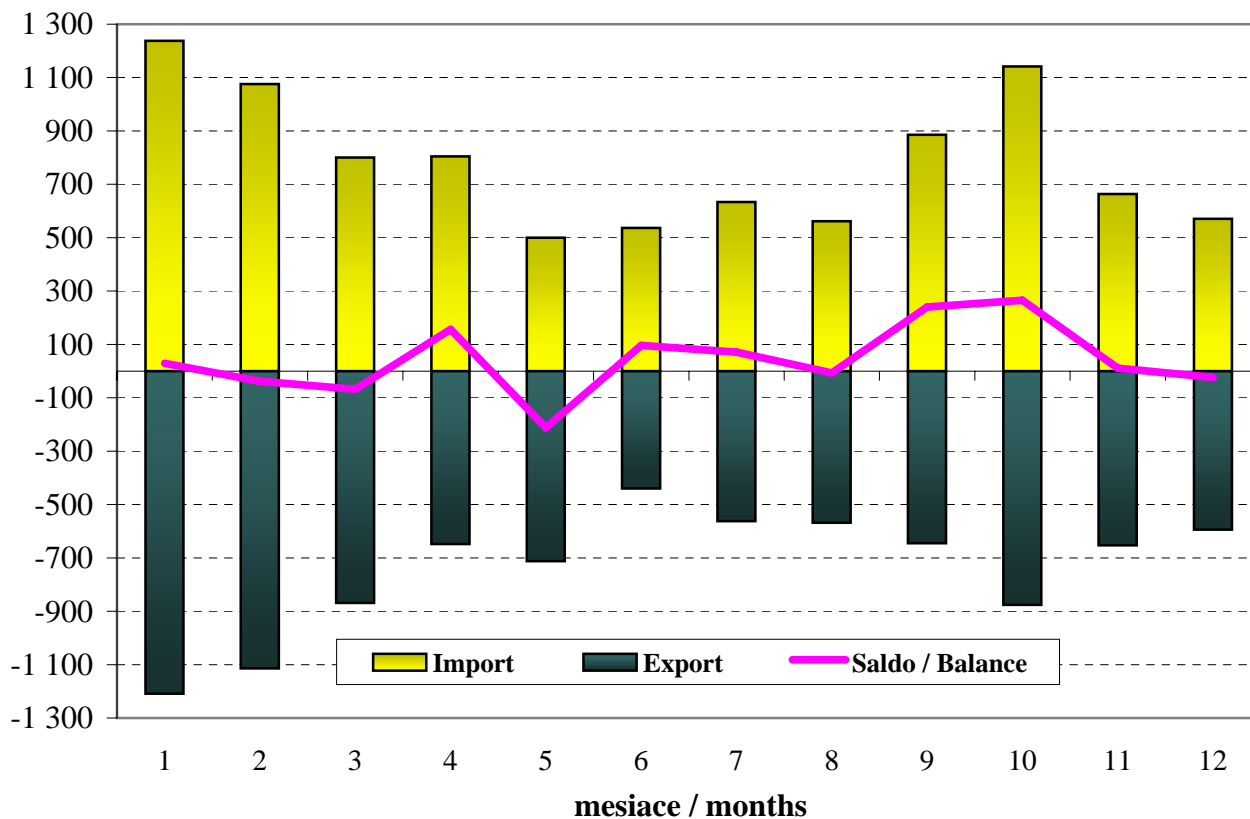
## ROČNÁ VÝROBA A SPOTREBA ELEKTRINY (GWh) Yearly Electricity Production and Consumption (GWh)



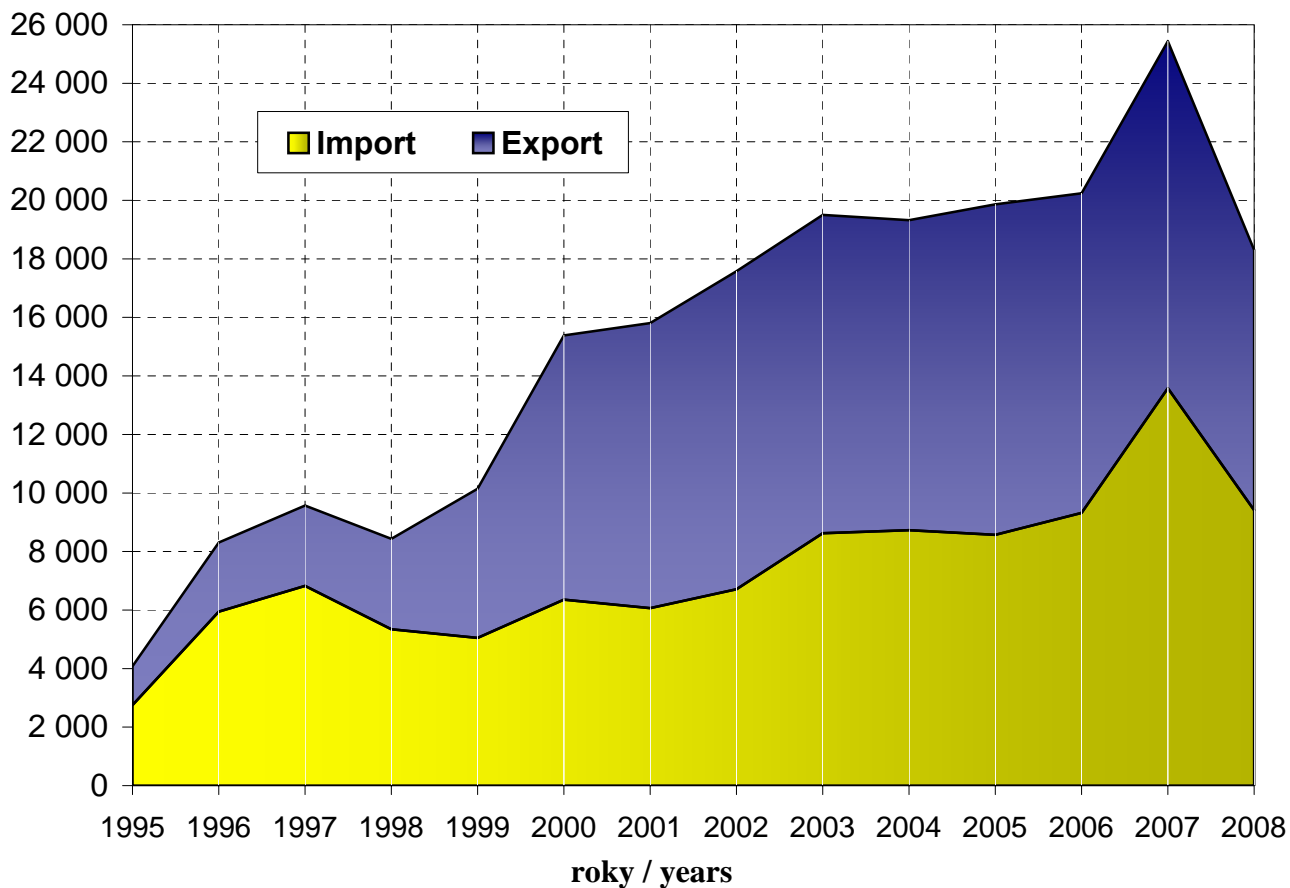
## PODIEL ZDROJOV NA POKRÝVANÍ MESAČNEJ SPOTREBY (GWh) Share of sources covering monthly consumption (GWh)



**NAMERANÉ MESAČNÉ CEZHRANIČNÉ PRENOSY ES SR (GWh)**  
**Physical Monthly Cross-Border Flows of Slovakia (GWh)**

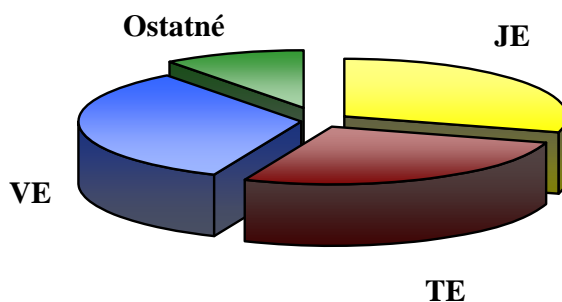


**NAMERANÉ CEZHRANIČNÉ PRENOSY ES SR (GWh)**  
**Physical Cross-Border Flows of Slovakia (GWh)**

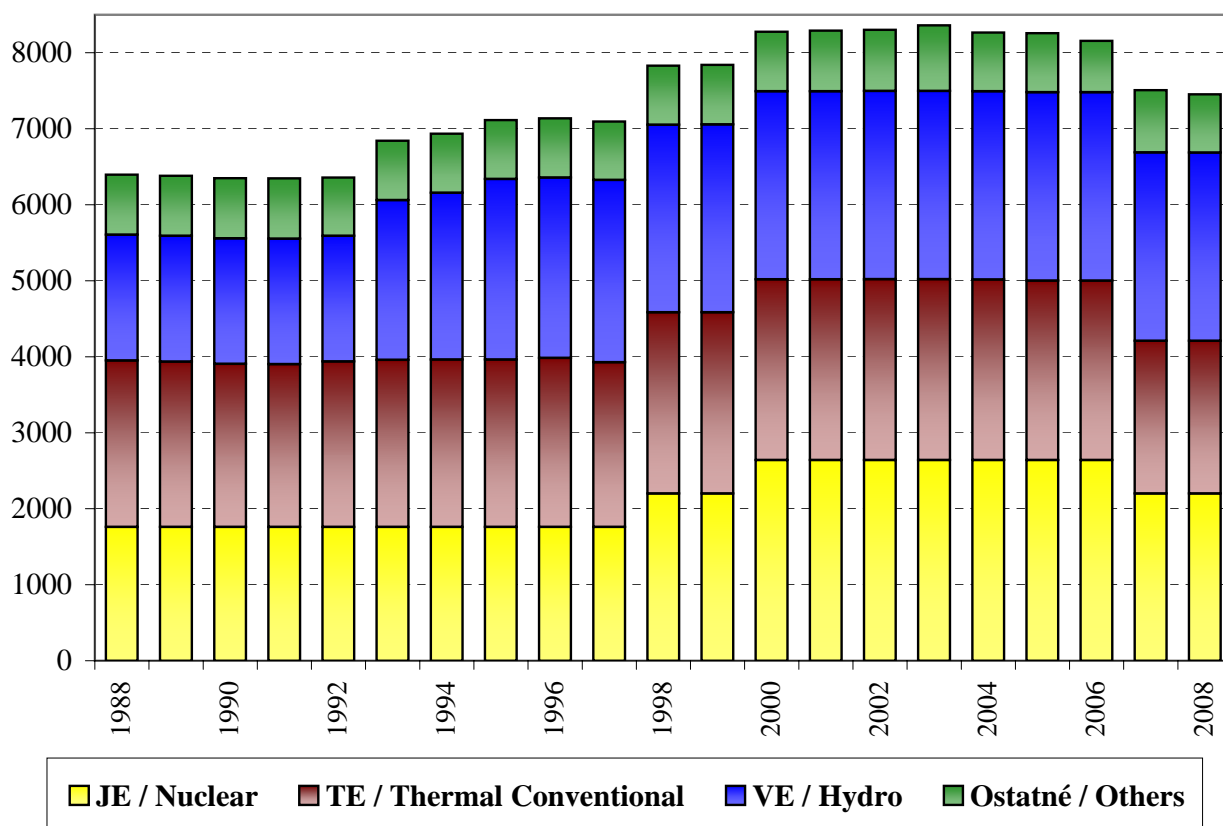


## INŠTALOVANÝ VÝKON ELEKTRÁRNÍ ES SR Installed Capacity of Power plants in Slovakia

Elektrárň	MW	%	Type
JE	2 200	29,5	Nuclear
TE	2 009	27,0	Thermal
VE	2 478	33,2	Hydro
Ostatné	766	10,3	Others
<b>Suma</b>	<b>7 453</b>		<b>Total</b>



## INŠTALOVANÝ VÝKON ELEKTRÁRNÍ ES SR (MW) Installed Capacity of Power Stations in SR (MW)



## PRENOSOVÁ SÚSTAVA SLOVENSKEJ REPUBLIKY Transmission System of Slovak Republic

Celkový transformačný výkon	<b>10 010 MVA</b>	Total transformation capacity
Vedenia 400 kV	<b>1 752 km</b>	400 kV Lines
Vedenia 220 kV	<b>962 km</b>	220 kV Lines
Rozvodne 400 kV	<b>16</b>	400 kV Substations
Rozvodne 220 kV	<b>8</b>	220 kV Substations
Transformátory 400/220 kV	<b>1 400 MVA</b>	400/220 kV Transformers
Transformátory 400/110 kV	<b>6 410 MVA</b>	400/110 kV Transformers
Transformátory 220/110 kV	<b>2 200 MVA</b>	220/110 kV Transformers